

FM18 + XSB Floor Scale

Precision Heavy Duty Floor Platforms



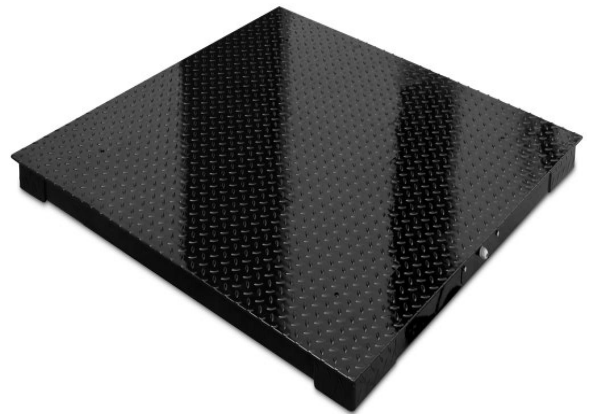
FM18 rewrites the requirements of being a powerful indicator. It contains nearly all the features and functions which static and simple dynamic industrial weighing applications need.

Equipped with a 24 bit Low-Noise Δ - Σ Analog-to-Digital Converter, special linearity compensation method plus all other state-of-the-art technologies applied. These enable **FM18** to provide fast, stable and almost error-free weighing result anytime when needed.

True 6-wire load cell compensation system, easily drive up to 8 x 350 Ω , runs at 1.6 million internal counts plus all the built-in function, these are the foundation which make **FM18** good for nearly all static and mid to low speed dynamic weighing applications.

FUNCTIONS

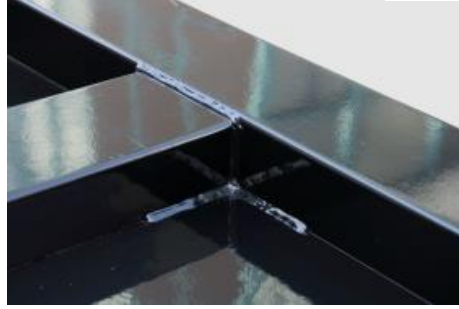
- Weighing
- Checkweighing Function
- Piece Count Mode with Check Function
- Percentage Mode with Check Function
- Animal Weighing
- User Programmable Check Functions Buzzer Output
- Memory Accumulation
- Pre-set Tare
- Independent and User Programmable Print Format for Weighing, Piece Count, Percentage Mode
- Independent and User Programmable Data Format for Checkweighing, Piece Checking, Percentage Checking
- Built-in Inflow and Outflow Control Logic
- Built-in Near Zero Logic for Dynamic Weighing Applications
- Support Ticket and Label Printing
- Support Q&A with other Peripherals
- Support Direct Control by External Peripheral
- User Selectable Parameters: -
 - ◆ 6 x Auto Power Off Time
 - ◆ 4 x Filter Intensity Mode
 - ◆ 3 x Backlight Mode
 - ◆ 2 x Selectable Auto Tare Function
 - ◆ 4 x RS232 Data Output Baud Rate
 - ◆ 4 x Output Mode
 - ◆ 3 x Data Format
 - ◆ 3 x M+ Mode
 - ◆ 3 x Data Output Mode
 - ◆ 4 x Data Transmission Time Interval
 - ◆ 8 x Number of Print Copy
 - ◆ 6 x Output Band Rate
 - ◆ 7 x Initial Zero Range
 - ◆ 7 x Manual Zero Range
 - ◆ 6 x Auto Zero Tracking Range
 - ◆ Bi-Directional Communication Through RS232 or TTL Interface



XSB is designed & built to meet a wide range of heavy traffic & high resolution industrial applications up to 6000kg.

It delivers un-exceptional reliability, accuracy and skin smooth performance to meet weighing, batching and counting needs.

Versatility, Functionality and Accuracy are always Built-in



KEY FEATURES

- 24 bit Low-Noise Delta to Sigma to Delta ($\Delta-\Sigma$) Analog-to-Digital Converter
- Support Single or Dual Weighing Range Mode
- Free Capacity and Division Setting
- kg & lb Conversion (Single Weighing Range Mode only)
- True 6-wire (with Remote Sense) Load Cell Compensation System
- Power up to 8 x 350 Ω Load Cells or 16 x 700 Ω Load Cells
- Supports 4-wire and 6-wire Load Cell Connections
- Real Time Clock
- Linearity Compensation ON or OFF
- Independent Zero Calibration.
- Auto or User Programmable Odd Weight Calibration
- Calibration and Metrological Control / Access by Hardware or Software
- Non-Resettable Trailer Count to Record Calibration and Metrology Parameters Changes.
- Gravity Compensation via Key Board
- 6 x 1-inch Wide Angle LCD Numeric Digits
- Capacity Tracking Bar to Show Applied & Remaining Weighing Capacity
- Battery Protection Features and Circuits
- Equipped with RS232, TTL Relay Output, Wireless Communication Interfaces/TTL RS232
- Backlight, Rechargeable Battery, Power Adaptor and Pillar (ϕ 35~38mm) Mount Holder Included

Quality, Structural Strength & Accuracy are Safeguarded by

- Material Grade
- Material Thickness
- Tooling & Method used to handle Material Cutting, Blending ... etc.
- Smart & CNC Made Oversized Heavy Duty Load Cell Supporting & Mounting Blocks
- Strict Construction Accuracy Standards Applied
- Smart & High Quality Stainless Steel Junction Box used
- OIML / NTEP C3 Approved or FM Special Grade Load Cell
- High Density Channel Frame Allocation
- High Quality Epoxy Coating

Key Features

- Extremely Rigid Structural Steel Channel Frame Specifically Designed for Heavy Traffic
- Super Strong Channel Frame Provides Extra Protection by Enclosing the Load Cells, Cable and Junction Box Inside and away from Chemicals and Other Industrial Element
- Heavy-Duty Industrial design Threaded Eyebolt Holes for Easy Lifting
- Top-of-Floor or In-Floor Mounting
- Swivel Adjustable Feet Eliminate Weighing Errors due to Misalignment
- Construction Accuracy: - Better than 0.25%

Versatility, Functionality and Accuracy are always Built-in

XSB Series Precision Heavy Duty Floor Platforms

Specifications

Model No.	Platform Size (mm)		Load Cell		
XSB-0808 (A, N)	800 x 800		<div>Type: -<ul style="list-style-type: none">A: - OIML / NTEP C3 approvedN: - FM Special Grade</div> <div>Assignment: -<ul style="list-style-type: none">4 x 500kg for Max = 1T4 x 1000kg for Max = 2T4 x 1500kg for Max = 3T4 x 2000kg for Max = 5T4 x 3000kg for Max = 6T</div>		
XSB-0810 (A, N)	800 x 1000				
XSB-1010 (A, N)	1000 x 1000				
XSB-1012 (A, N)	1000 x 1200				
XSB-1212 (A, N)	1200 x 1200				
XSB-1215 (A, N)	1200 x 1500				
XSB-1515 A, N)	1500 x 1500				
XSB-1520 (A, N)	1500 x 2000				
XSB-2020 (A, N)	2000 x 2000				
Nominal Capacity (Max)	1T	2T	3T	5T	6T
Adjusted Eccentric Accuracy (kg)	0.05	0.1	0.2	0.5	0.5
Structural Strength	Maximum = 6T; Safe Overload = 7.2T				
Material & Structural Data	All Material = Mild Steel				
	Thickness: - <ul style="list-style-type: none">Top Plate Thickness ≥ 5.14mmUnderneath Columns Thickness ≥ 3.5mmLoad Cell Support Blocks ≥ 18.0 mm				
	Width: - <ul style="list-style-type: none">Width of Load Cell Mounting Columns = 120mmWidth of Reinforce Columns = 120mm				
	Overall Height: - <ul style="list-style-type: none">71mm (platform only)97mm (completed with Load Cells and Adjustable Feet)				
Construction Accuracy	Better than 0.25%				
Load Cell & Output	OIML / NTEP C3 Approved or FM Special Grade 40CrNiMoA Alloy Steel Load Cells, 3mV/V				
Junction Box	JB-46S Stainless Steel Junction Box				
Signal Cable	5m 6-wire Shielded Cable Included				
Operating Environment	-10 ~ 40°C (14 ~ 104°F) Non-condensed R.H. ≤85%				

In the interest of improvement, specifications may change prior to notice

Option

- Mild Steel Ramp
- Pit Installation Frame

Order Code

Model No.: - Nominal Capacity - Load Cell Type.

Examples -

- XSB-1010-1T-A for platform size = 1 x 1m; nominal capacity = 500kg; with approved load cells.
- XSB-1215-2T-N for platform size = 1.2 x 1.5m; nominal capacity = 2000kg; with FM Special Grade load cells.



Fidelity Measurement Co., Ltd.
<http://www.fi-measurement.com>
 e-mail: info@fi-measurement.com

REV.: XSB/18/01/02